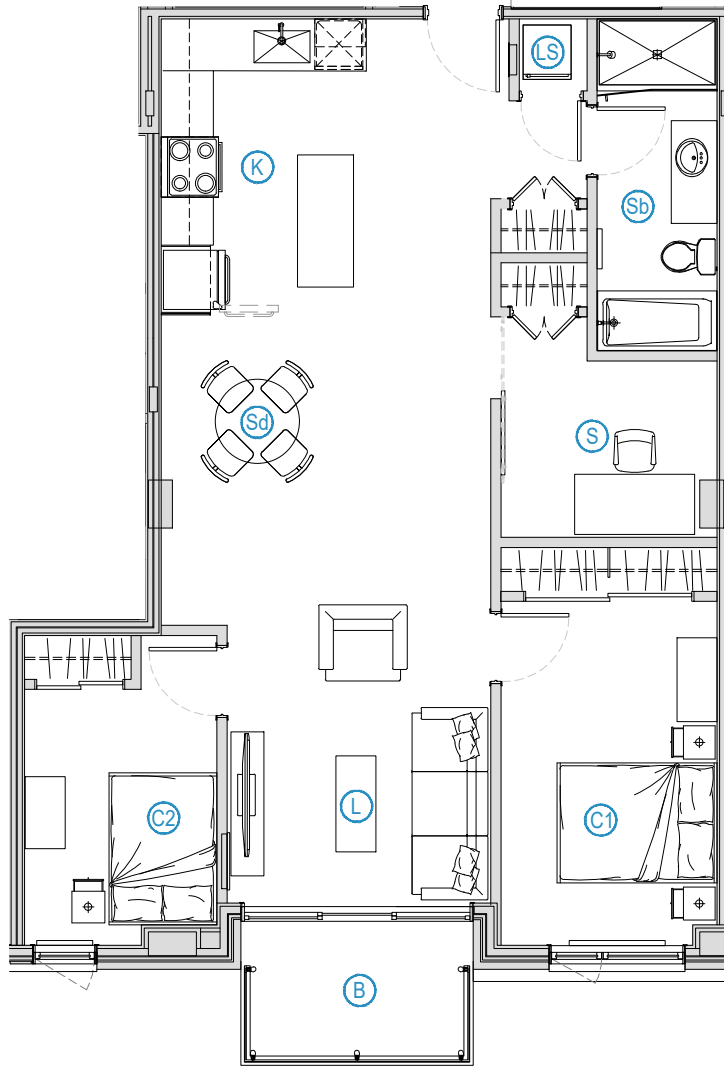




Le Brillant



Unité - Unit : 605

Étage | Floor : 6e

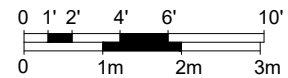
Chambre | Bedroom : 2

Salle de bain | Bathroom : 1

Superficie | Superficies : 941 pi²

Balcon | Balcony : 58 pi²

- L Salon | Living Room
12'-7" x 11'-0"
- C1 Chambre 1 | Bedroom 1
14'-4" x 9'-0"
- C2 Chambre 2 | Bedroom 2
10'-8" x 8'-0"
- K Cuisine | Kitchen
12'-4" x 11'-0"
- Sd Salle à diner | lunchroom
11'-11" x 11'-6"
- Sb Salle de bain | Bathroom
13'-10" x 5'-0"
- S Bureau | Study
7'-4" x 9'-0"
- B Balcon | Balcony
9'-8" x 6'-0"
- LS Buanderie | Laundry



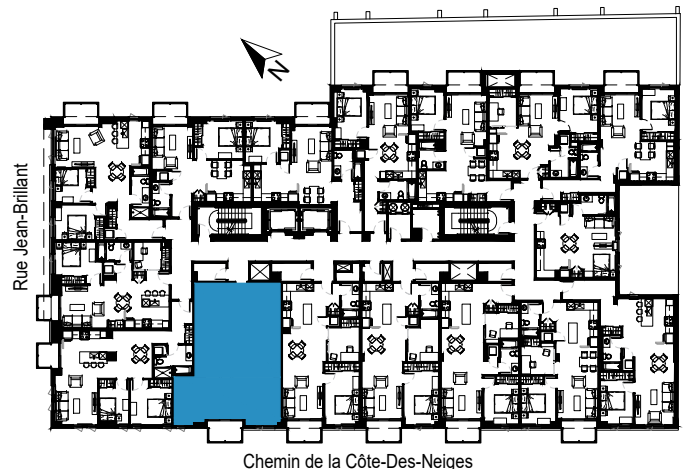
Information :

lebrillant@sidev.com | www.lebrillant.ca

Loyer / Rent : _____

Frais de casier / Locker fee : _____

Loyer total / Total rent : _____



Initiales locateur

Initiales locataire (1)

Initiales locataire (2)

--	--	--